

Parthia Country Factsheet

TOTAL POPULATION:
74.3 million
PARNI (CAPITAL) TOTAL POPULATION:
23.3 million

PARTHIA AND REGIONAL COUNTRIES

PARTHIA

Area: 92, 090 sq. km

SE Population:

25.6 m Parni County population

3.4 m Arta County population

SW Population:

11.9 m Byzantium County population

8.8 m Byzantium city population

9.8 m Hatra County population

5.7 m Hatra town population

1.3 m Indus town population

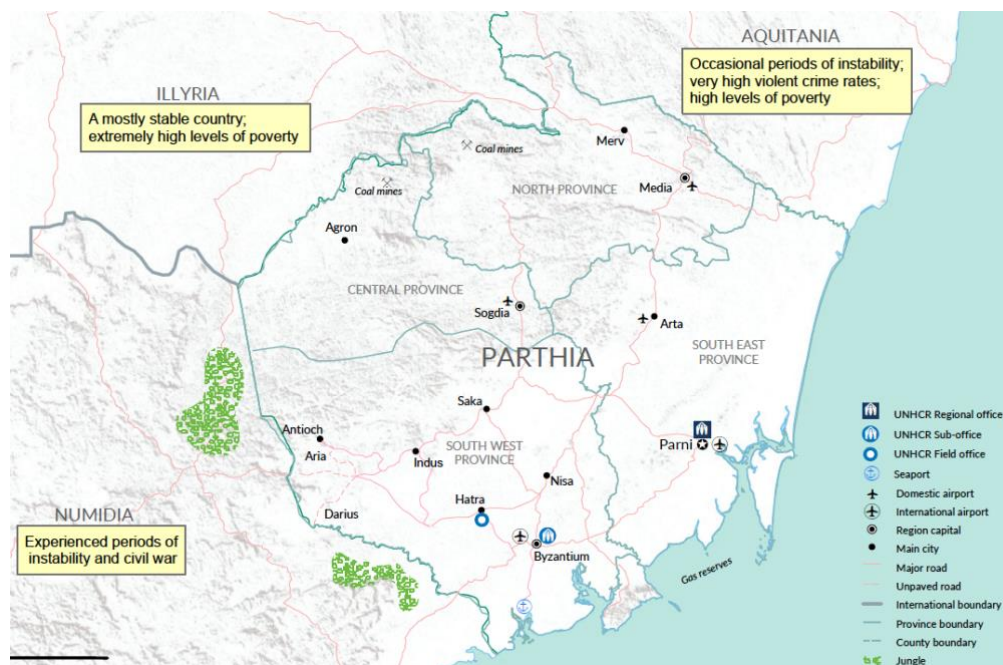
7.5 m Antioch County population

3.3 m Antioch town population

3.8 m Nisa County population

5.7 m Nisa town population

650K Saka town population



Economy

- One of fastest growing economies and middle-income countries; market-based mixed economy with a rapidly expanding private sector; developing nation – an emerging market
- Per capita income: \$1906 USD (2019, IMF); GDP: \$317 billion USD; Remittances from diaspora contribute approx. \$15 billion USD/year
- Major industries: textiles, pharmaceuticals, shipbuilding, steel, electronics, energy, construction materials, chemicals, ceramics, food processing
- Challenges to economic development: Insufficient power supply; poor governance, corruption, weak public institutions (World Bank)
- Resources/Exports
 - Natural gas: major gas fields/reserves in South East and South West Provinces
 - Coal reserves: coal mines operating in Central and North Provinces
 - Additional exports: Jute, tea, fish/seafood

Agriculture

- Largest employment sector (14.2% of GDP in 2017; employing 42.7% of workforce)
- Performance in this sector has huge impact on major macroeconomic objectives (e.g., employment generation, poverty alleviation, food security, etc). Improvements have achieved steady increases in production
- Primary crops: rice, jute; additional crops: vegetables, maize, tea

Infrastructure

TRANSPORTATION:

- Airports: Two international/domestic airports: Parni, Byzantium; Four domestic airports: Antioch, Sogdia, Arta, Media
- Rail, Road and highway networks
 - State owned railway network connecting all major cities and towns
 - Highway networks connect all major cities; roads connect towns (unpaved in remote areas)
- Seaports and inland waterways
 - Large waterway network throughout; two major seaports (Parni, Byzantium) and 10 smaller sea/river ports where commercial fishing is prevalent

WATER AND SANITATION:

- Main sources: groundwater, reservoirs, dams
- Pipe borne water available in homes in provincial cities/towns and some larger villages
- Some rural areas unsafe levels of arsenic and use mainly hand pumps and rainwater tanks
- Estimated 60% of population have access to adequate sanitation facilities; access is poorest in Central and Northern Provinces

Governance

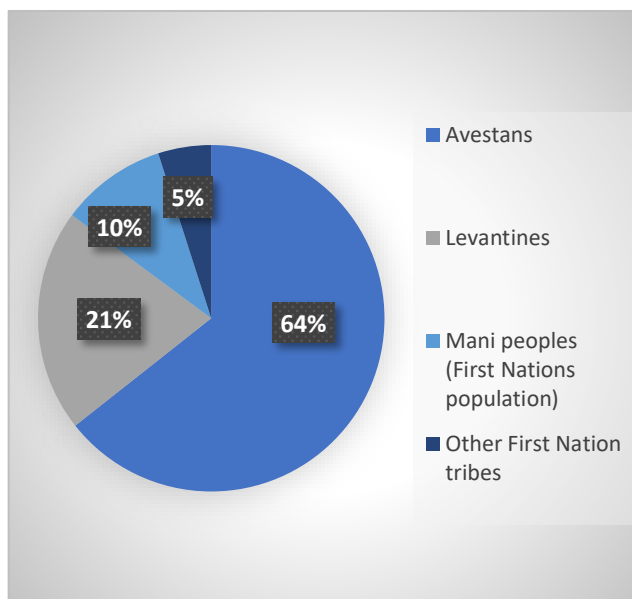
- Relatively stable (socially and politically) and peaceful democratic nation. Parliamentary system with lower and upper houses
- National elections are every five years for President, Vice President, and members of parliament (MPs). (Most recent election held last year, resulting in a change in administration.) MPs for both houses of parliament are popularly elected from each county; the number of MPs is calculated according to population numbers
- Divided into provinces, led by Provincial Governors who are appointed by the President; provinces are further divided into smaller counties, led by Mayors who are appointed by the Provincial Governor

Parthian Demographics

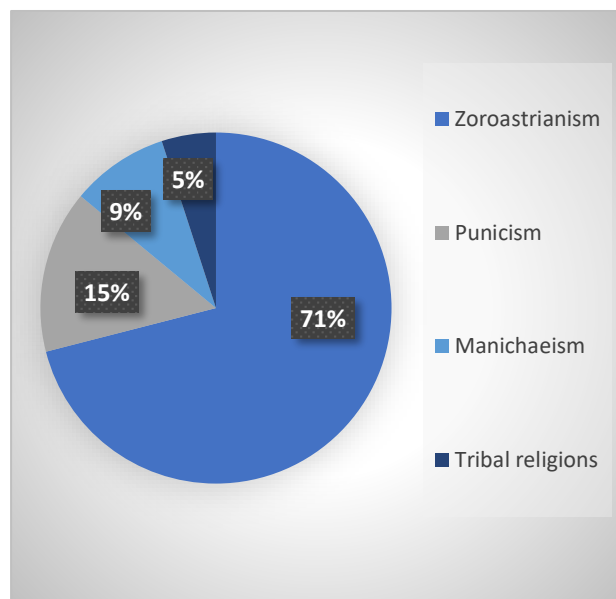
- Total population: 28.7 million (Census data from previous year)
- Total fertility rate: 2.05
- Relatively young population: 35% aged 15 years or below; 5% aged 65 years or above
- Ethnolinguistic groups and religions:
 - Avestans: adherents of Zoroastrianism (main religion in Parthia)
 - Levantines: (mostly) adherents of Punicism
 - Mani peoples (main First Nations group): (mostly) adherents of Manichaeism
 - Other Indigenous tribes: adherents of Tribal religious beliefs

PARTHIAN DEMOGRAPHICS

Ethnolinguistic Groups



Religious Groups



Additional Facts

CLIMATE AND NATURAL HAZARDS

- Maritime temperate on east and south coastlines; cooler and rainy in the north; warmer and drier in the south
- Low-lying plains and waterways in South West Province; mountainous terrain in the Central and Northern Provinces; water basin coastal areas in the South East Province
- Heavy rainfall in southern parts of Central Province, prone to landslides and severe floods into northern parts of the South West Province

LANGUAGE SPOKEN

- Parthian (very similar to Numidian – most can understand each other)