



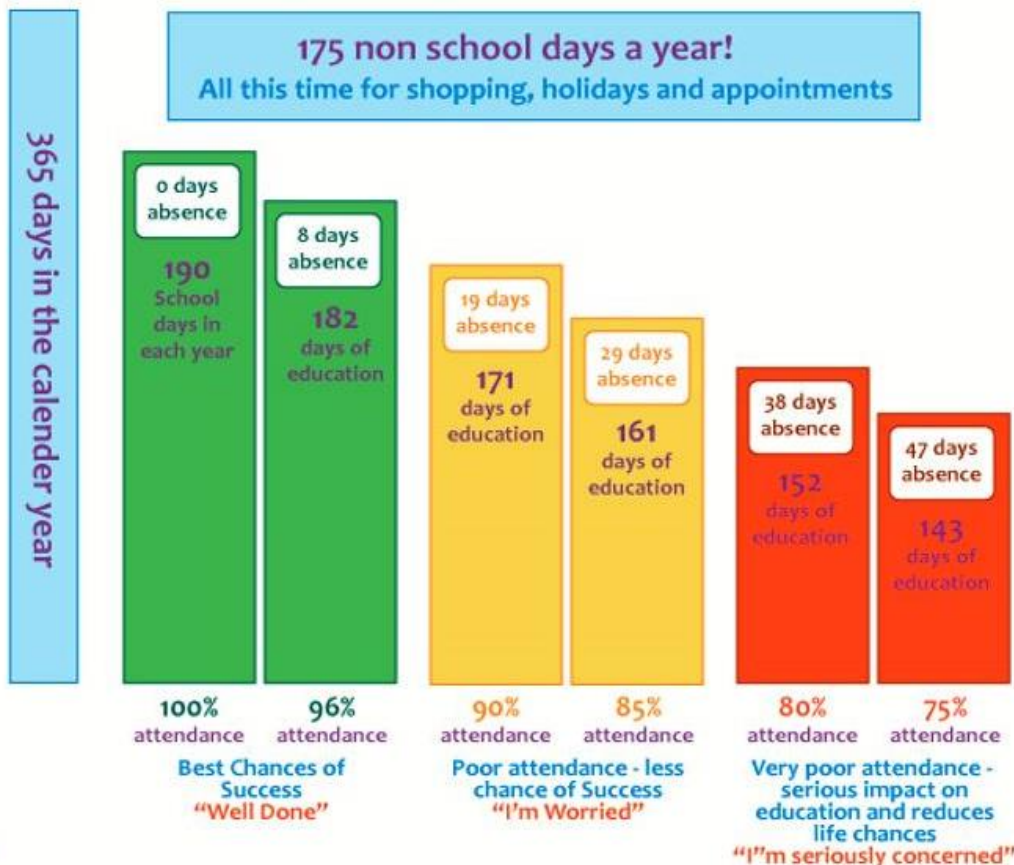
# Good attendance at Limehurst Community Primary School

Ensuring that children receive a full-time education is a **LEGAL** requirement for all parents.

At Limehurst Community Primary school we want the amount of missed education to be reduced as much as possible. Success at school and high achievement is closely linked to good school attendance. We believe that our community is stronger together, with all of our pupils in school, on time, every day. We are building life skills, life-long friendships and preparing your child for future success.

## Good Attendance Means...

being in school at least 96% of the time. This means 8 Days Off!



### What YOU must do:

- ✚ Inform school of your child's absence by telephone or message on the school gateway app, before 8.30am each day of their absence.
- ✚ Tell the school in advance, of any medical appointments and bring appointment cards/letters to the school office (medical letters can be emailed to the school office - [info@limehurst.oldham.sch.uk](mailto:info@limehurst.oldham.sch.uk))
- ✚ If your child only has a minor illness and you are unsure whether they are well enough to attend school, you can google '*The NHS guidance - Is my child too ill for school?*' - which has been designed to support parents in their decision making about mild illnesses.
- ✚ If you and your child are experiencing difficulties with school attendance, please talk to us as a first step so we can help!

### What WE will do:

- ✚ Check your child's attendance every day.
- ✚ Phone home to discuss your child's attendance with you.
- ✚ Invite you into school for attendance meetings if we are concerned.
- ✚ If we cannot establish a reason for absence, then we may make a welfare home visit.
- ✚ Issue a penalty notice/fixed penalty if your child reaches **10** unauthorised absence sessions (there are 2 sessions per day - AM &