

# GLOBAL INTERNSHIP BOOTCAMP

Partners Guide

becomexpert

becomexpert™

[www.becomexpert.com](http://www.becomexpert.com)



**becomexpert**™

COMPANY  
PARTNERSHIPS  
SUCCESS TOGETHER

## ABOUT **becomexpert™**

Welcome to **becomexpert™**, founded on a vision that emerged from extensive systems engineering and management research in 2003, at the dawn of today's AI and Data era which has since permeated all careers.

Our mission is to foster a unique synergy between science, business, and human resources, crafting a triangular synergy essential for creativity.

Evolving from INCKM, decades have honed our methodology. Today, **becomexpert™** thrives through a distinguished network of global experts, eminent scholars, and seasoned instructors, reinforced by robust industry partnerships to cultivate and deploy elite talent.

Our essence lies in merging academic insights with practical skills, preparing talents to excel in this AI and Data-driven world with creative foresight.

We rely on following core values:

- Bridging science, business, and talent
- Partnering with companies to innovate together
- Fostering creativity in the AI landscape.



**becomexpert™**  
The Way to be  
CREATIVE in  
the AI Era

Elevate  
Opportunities,  
Careers,  
and Skills

## GLOBAL INTERNSHIP BOOTCAMPS

Becomexpert™ Global Internship Bootcamps provide a transformative learning journey tailored for those eager to advance in various career paths within the AI and data-driven era.

By combining theoretical knowledge with practical application, our bootcamps prepare NexPERTS™—a term we proudly use for our interns—for the challenges and opportunities of today's professional landscapes.

Here's what sets our bootcamps apart:

- Engage in live learning and mentorship sessions,
- Gain hands-on experience with projects that provide a solid foundation for careers.
- Learn from a distinguished network of global experts and eminent scholars.
- Benefit from recommendations backed by world-renowned advisors and priority hiring at leading firms after successful completion.
- Beyond technical knowledge, our NexPERTS™ are trained in crucial soft skills such as teamwork, communication, adaptability, creativity, and critical thinking, essential for thriving in professional workplaces and the AI era.



Boost Your  
TALENT  
Strategy with  
**becomexpert™**



#### TOP TALENT ACCESS

Skip traditional hiring steps by directly connecting with the highest-rated trained bootcamp interns.



#### HIRE WORLD-CLASS TALENT

Bootcamp interns gain practical skills and insights from global experts, ready for immediate impact.



#### TARGETED RECRUITMENT

Customize internship content to meet your specific needs, ensuring recruits can tackle your challenges.



#### ACQUIRE AI-SAVVY TALENT

Stay ahead by hiring interns trained in cutting-edge artificial intelligence tools in their specific field of work.



#### RECRUITMENT COST SAVINGS

Benefit from a streamlined recruitment process and invest in more capable, ready-to-work talent.



#### UPGRADE YOUR TEAM

Enhance your current workforce with the latest tech knowledge, avoiding the integration costs of new hires.



**Dr. Anand Rao**  
Carnegie Mellon professor, Global AI & data science leader



**Dr. Marcia Pereira**  
AI-driven green building pioneer, CEO, MIT alumnus.



**Dr. Zeeshan Ahmed**  
AI scientist, Meta, ex-Amazon, Microsoft, author, speaker



**Federico Casabianca**  
Senior PM, Thinking With You, ex-Erudit, Nextthink, GFT



**Alec Boere**  
Next-gen AI specialist, digital innovator, Infosys Consulting



**Eric Schnepf**  
HPC expert, Senior ISC advisor, Fujitsu engineering alumnus



**Hidemi Takano**  
Product leader, Liberty Mutual VP, ex-Amazon, MBA IE



**Hyeonsuk Lim**  
Digital marketing strategist, Alibaba.com, AU Government

**50+**  
Global Advisors,  
Experts and  
Guest Lecturers<sup>1</sup>



1. The individuals highlighted here represent a fraction of our distinguished global experts and scholars. To discover more about our esteemed guest lecturers, scientific board members, and mentors, please visit our website: <https://becomexpert.com>



becomexpert™  
Global Expertise &  
Academic Insights  
Network<sup>1</sup>



1. Our bootcamps are enriched by experts with backgrounds in leading global firms and universities, leveraging their insights to inspire innovation and growth. The presence of company, university, and institute logos reflects the diverse professional landscapes our guest speakers, experts, and lecturers hail from, highlighting the caliber of expertise accessible to our participants. All product and company names are trademarks or registered trademarks of their respective holders. Use of them does not imply any affiliation with or endorsement by them.

Internship Bootcamp  
Junior **Associate Product  
Manager** Program



Internship Bootcamp  
Junior **SEO Analyst/  
Specialist** Program



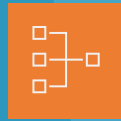
Internship Bootcamp  
Junior **Supply Chain  
Analyst/Planner** Program



Internship Bootcamp  
Junior **Strategy  
Analyst/Specialist** Program



Internship Bootcamp  
Junior **System  
Analyst/Engineer** Program



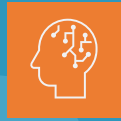
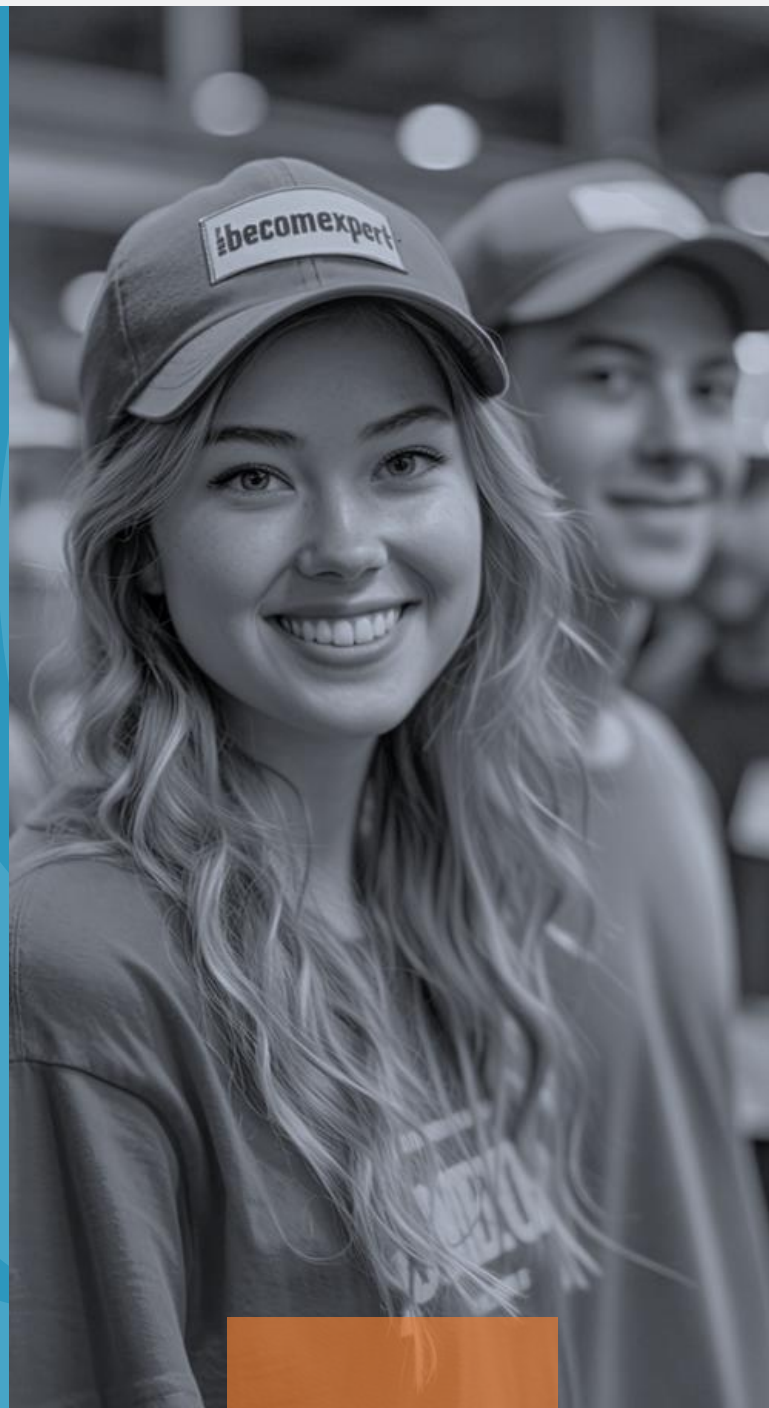
Internship Bootcamp  
Junior **Cyber Security  
Specialist** Program



Internship Bootcamp  
Junior **Financial  
Analyst** Program



**Customized Internship Bootcamps**  
from Entry-Level to Advanced,  
Tailored to Company Needs



Internship Bootcamp  
Junior **Artificial Intelligence  
Engineer** Program



Internship Bootcamp  
Junior **Project Management  
Analyst** Program



Internship Bootcamp  
Junior **Data Analyst/  
Scientist** Associate



Internship Bootcamp  
Junior **Digital Marketing  
Specialist** Program



Internship Bootcamp  
Junior **Feasibility  
Analyst** Program



Internship Bootcamp  
Junior **Python  
Developer** Program



Internship Bootcamp  
Junior **International  
Business Analyst** Program



Internship Bootcamp  
Junior **Web/App  
Designer** Program

**becomexpert™**  
Cutting-Edge  
Internship  
Bootcamps



## SYNERGIZE WITH **becomexpert™**

At becomexpert™, we believe that collaboration is the cornerstone of innovation and progress in the AI and Data era. Our commitment to excellence in education, hands-on training, and industry integration sets us apart, offering our partners unparalleled access to a pool of top-tier talent and cutting-edge research.

Partnering with becomexpert™ is more than a strategic alignment; it's an investment in the future. Together, we can cultivate a new generation of leaders equipped to tackle the challenges of the AI-driven world, driving value for your organization and society at large.

As we delve into the specifics of our partnership models and success stories in the following sections of this guide, we invite you to envision the potential of a partnership with becomexpert™ — a collaboration that promises not just growth, but a shared vision for a smarter, more innovative future.

**becomexpert™**  
To Innovate  
Together and To  
Lead Tomorrow

**becomexpert**





FORGEAHEAD  
becomexpert™  
Strategic  
Partnerships

I

**PRIORITY RECRUITMENT<sup>1</sup>**

Introducing bootcamp grads to partner companies for priority hiring, following with companies' internal rules and further assessments.

II

**CUSTOM DESIGNED BOOTCAMPS**

Elite global Expert-led bootcamps tailored for partner companies' exact needs with the guarantee of fast-track hiring for the top graduates.

III

**OPPORTUNITY VISITS**

Partner companies host bootcamp live sessions, presenting their values, plans, processes, departments, and opportunities to attract top talents.

IV

**PARTNERS' CHALLENGES**

Interns work on partner companies' real challenges and projects during bootcamps. Successful ones get priority hiring recommendations.

V

**RAISING CURRENT TEAMS' SKILLS**

Enhance partner companies' current teams' skills with advanced tech like AI. Upskill employees leveraging their existing know-how.

VI

**SUSTAINABLE YOUTH SUPPORT**

Partner firms collaborate in social responsibility initiatives to boost sustainable education and job readiness for underserved youth.

1. Partnering with us grants our graduates a streamlined entry into your hiring process, where they may bypass initial steps yet must still fulfill all role-specific criteria and requirements and align with available roles.

Partnerships not only benefit our partner companies but also allow us to cut bootcamp costs by up to 70%, expanding global access to high-quality, practical training.



Company partnerships help us provide free bootcamps to talented youth in underprivileged areas through scholarships.



Revenues from corporate partnerships fund tech, AI, and business fundamental trainings for children in underdeveloped areas.



We're committed to supplying books and educational resources to schools and libraries in impoverished areas, utilizing partners' support.



**SUSTAINABLE  
FUTURE  
for the Next  
Generation**

## BEYOND SKILLS: PROFESSIONAL READINESS

Alongside career specific trainings, our bootcamps provide vital soft skills training, preparing interns as well-rounded professionals for their desired job positions in the AI-driven workplace.

### ■ EMOTIONAL INTELLIGENCE

Managing emotions for effective interpersonal interactions.

### ■ CRITICAL THINKING

Analyzing situations deeply to make informed decisions.

### ■ ADAPTABILITY AND FLEXIBILITY

Embracing change and new challenges positively.

### ■ DATA LITERACY

Interpreting and using data for informed decisions.

### ■ COLLABORATION

Working well with others to achieve common goals.

### ■ ETHICAL JUDGMENT & DECISION-MAKING

Making choices considering moral and societal impacts.



Essential Skills  
for Thriving in  
the AI-Driven  
Workplace



becomexpert™  
Partnership  
Tiers: Fueling  
Growth



FOUNDATION LEVEL  
Partnership .....

- + Priority access to bootcamps grads (Excluding A–Levels).
- + Smooth integration with your recruitment processes.



ENHANCED LEVEL  
Partnership .....

All Foundation level benefits, Plus:

- + Exclusive access to top (A–Level) bootcamps graduates.
- + Charging based on the number of bootcamps grads hired.
- + Opportunities for partner’s experts to mentor interns.
- + Host live visits to showcase your company culture.



PREMIER LEVEL  
Partnership .....

All previous levels benefits, Plus:

- + Unlimited access to hire from bootcamps graduates.
- + Integrating partner–specific projects in bootcamps.
- + Customized exclusive bootcamps for partner.
- + AI and new tech training for current employees.
- + Drive sustainable educational initiatives.



WHERE  
TOMORROW'S LEADERS  
LEARN TODAY

becomexpert



[www.becomexpert.com](http://www.becomexpert.com)